

Transportation Revenues

House Select Committee on Strategic Planning and Long
Term Funding Solutions

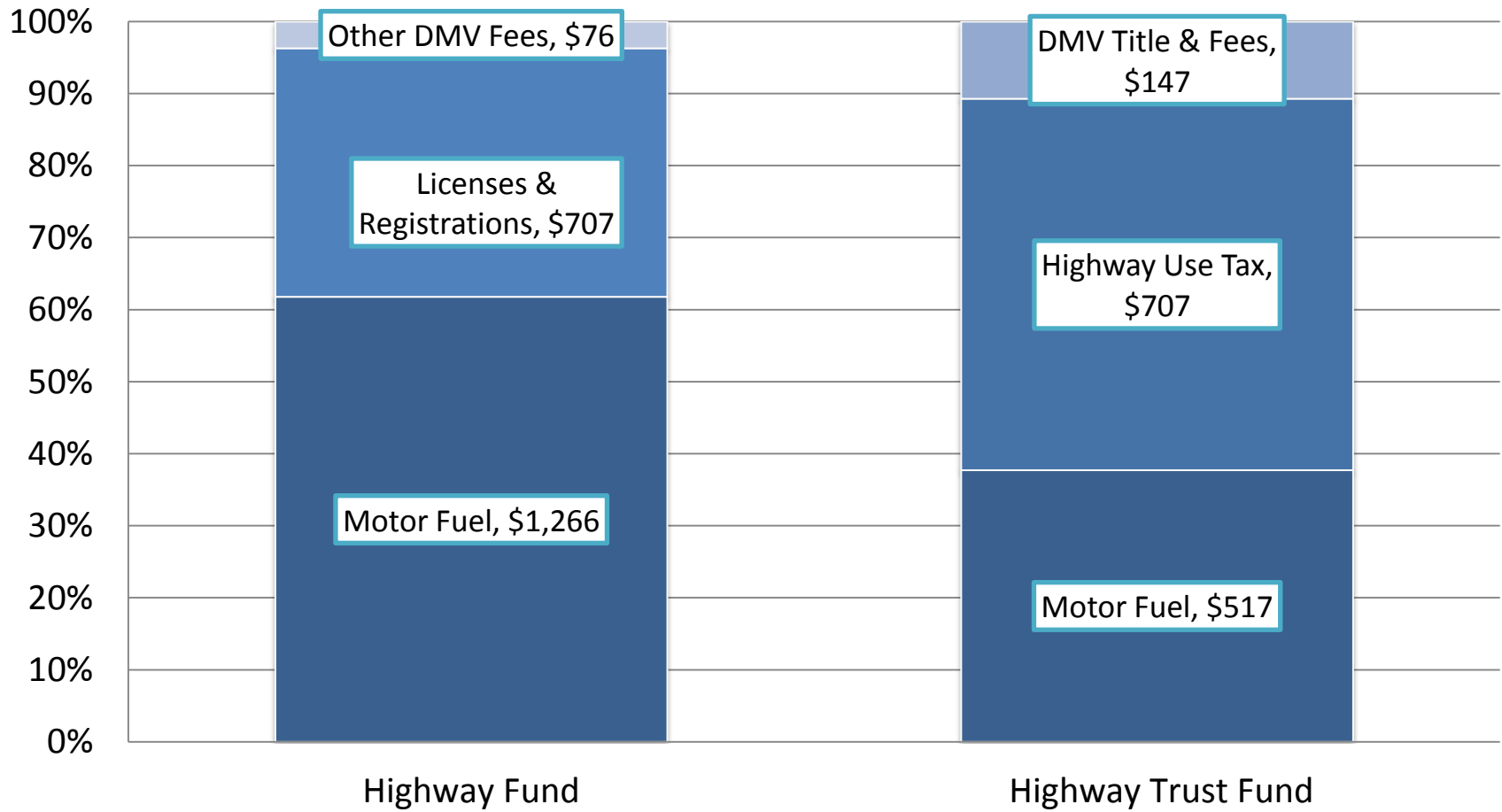
November 14, 2016

Amna Cameron
Fiscal Research Division



FISCAL RESEARCH DIVISION
A Staff Agency of the North Carolina General Assembly

State Transportation Revenues FY 2017 (in millions)

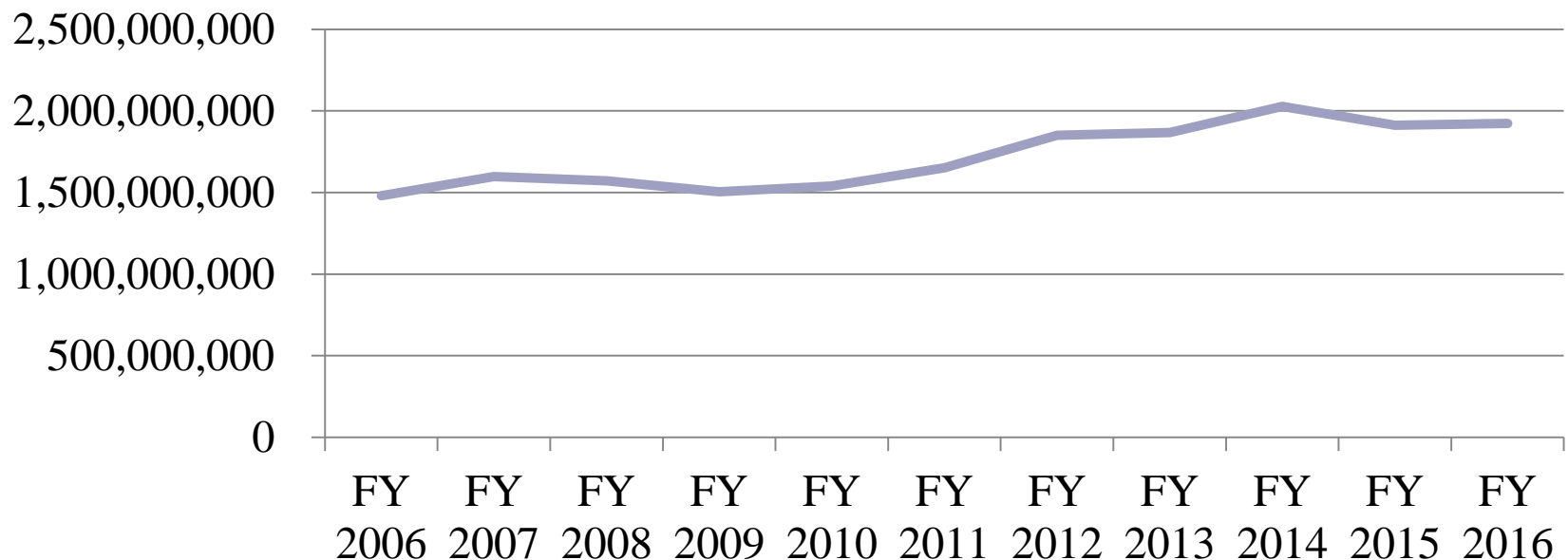


2015-17 Revenue Changes

- Motor Fuel Taxes
 - New Formula: More stability; Minimizes swings
 - Changed percentage distribution between Highway Fund and Highway Trust Fund
- Highway Use Tax
 - Raised caps on recreational and commercial vehicle sales
- DMV Fees
 - 30% across-the-board increase
 - Inflationary adjustment added
- Turnpike Projects
 - Raised cap on number of projects

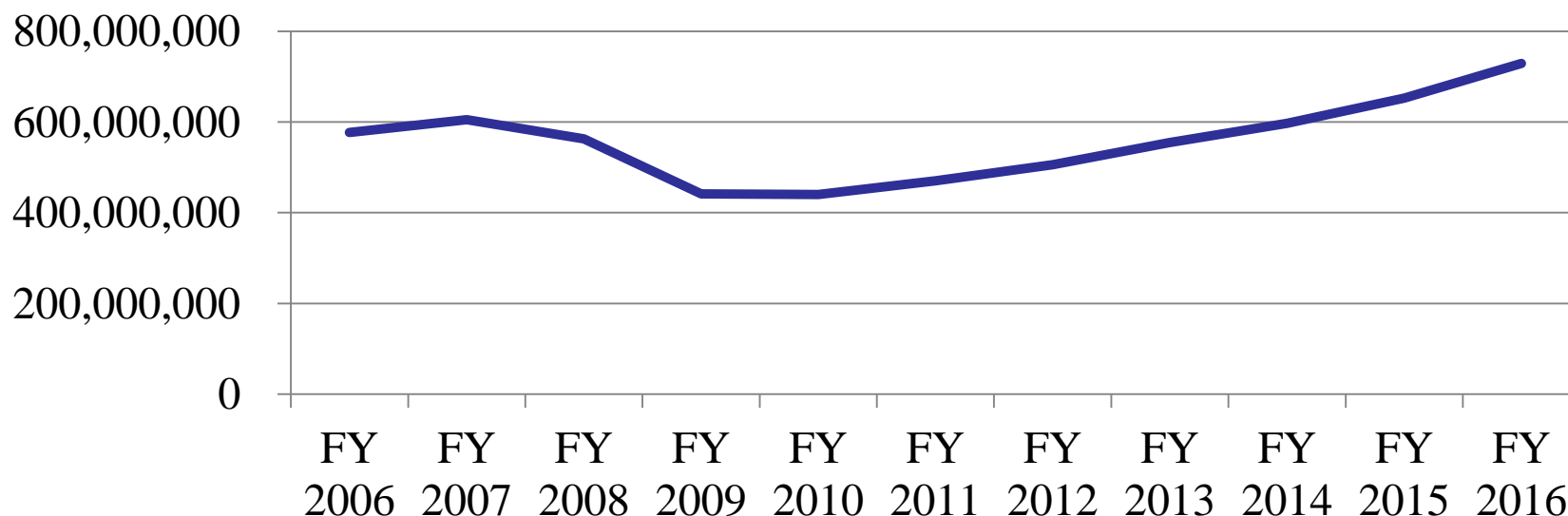
Motor Fuel Taxes

- Rate is 34 cents per gallon (cpg) through December 31, 2016.
- New formula used for January reset. Rate effective for one year.
- Formula uses population and CPI-U: Energy.
- One cent equals \approx \$50 million in tax revenues.



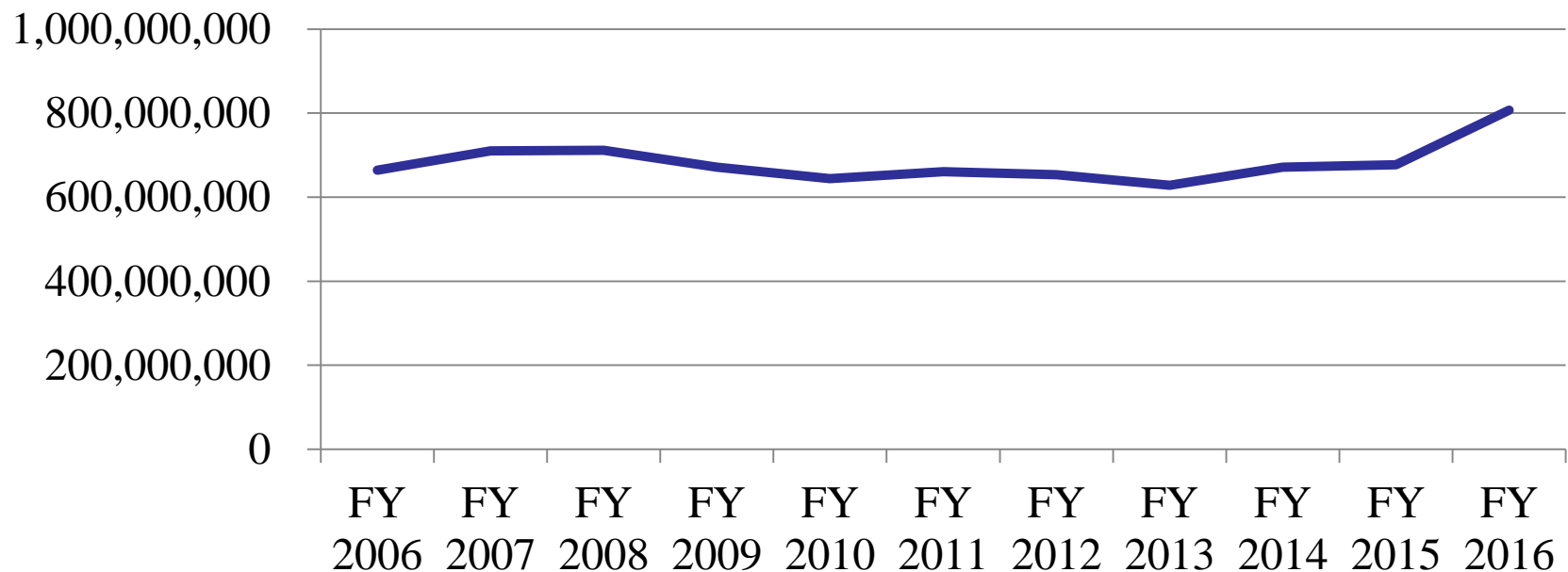
Highway Use Tax

- Highway Use Tax is 3% of value of vehicle net of trade.
- North Carolina tax is lower than Georgia, Virginia, and South Carolina.
- Economic recovery showing in car sales. Further increases expected.



DMV Fees

- Driver licenses, truck licenses, vehicle registration fees, vehicle titles, lien recordings, safety/emission inspection fees, overweight/oversize permits...
- Generally driven by demographics.



Completed Toll Projects and Projects Under Construction

Name	Total Cost	Years Tolled	Annual Gap Funding	Issues
Triangle Expressway	\$1 billion	29	\$25 million (FY 2009)	Opened in Dec 2011 \$36.3 million in revenues in FY2016
Monroe Connector	\$731 million	30	\$24 million (FY 2011)	Construction began in May 2015 Open to Traffic in November 2018 Final Completion in Spring 2019
I-77	\$655 million (\$88 million State contribution + DRAM)	50		Construction began in November 2015. Open to Traffic in Late 2018